

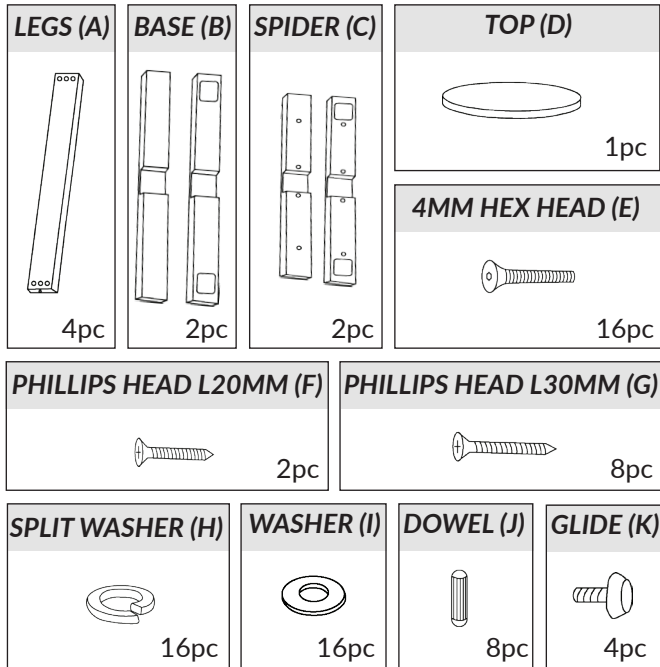
# CHUNK ROUND BAR eZ ASSEMBLY INSTRUCTIONS

D800mm & D900mm Bar Tables

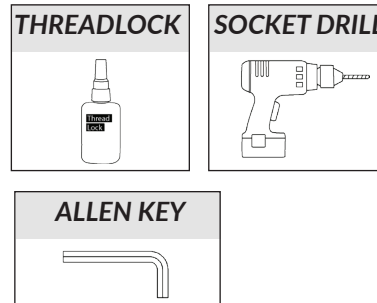


scan me

## PARTS:



## TOOLS (NOT INCLUDED):

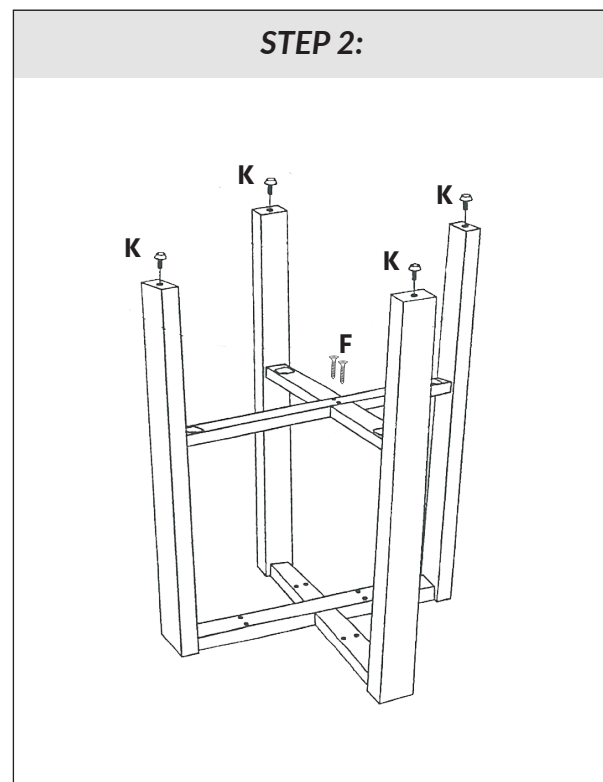
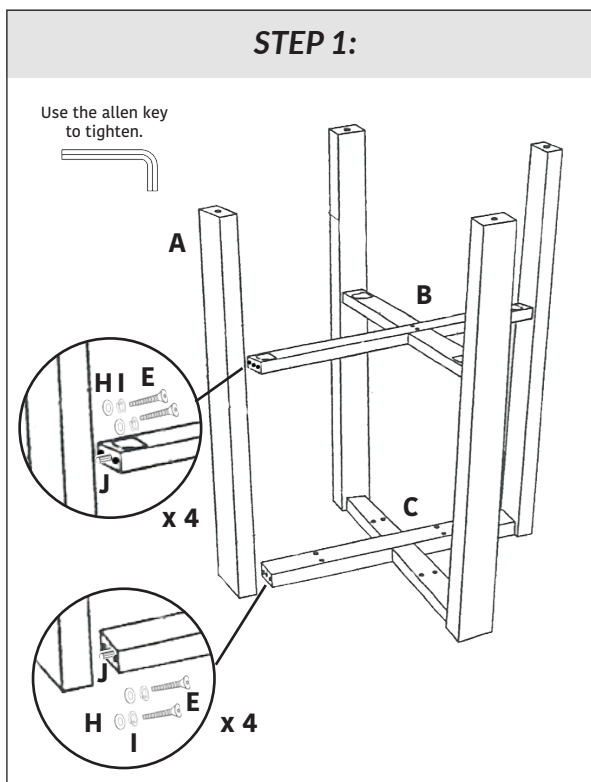


We strongly recommend applying thread lock to the full length of all screws and using an impact drill with attachment if possible. Scan the QR code with a phone or tablet to access the assembly video.

### WARNING:

Always take care with an impact drill, especially when screwing into the top.

## INSTRUCTIONS:



# CHUNK ROUND BAR **ez** ASSEMBLY INSTRUCTIONS

D800mm & D900mm Bar Tables



scan me

